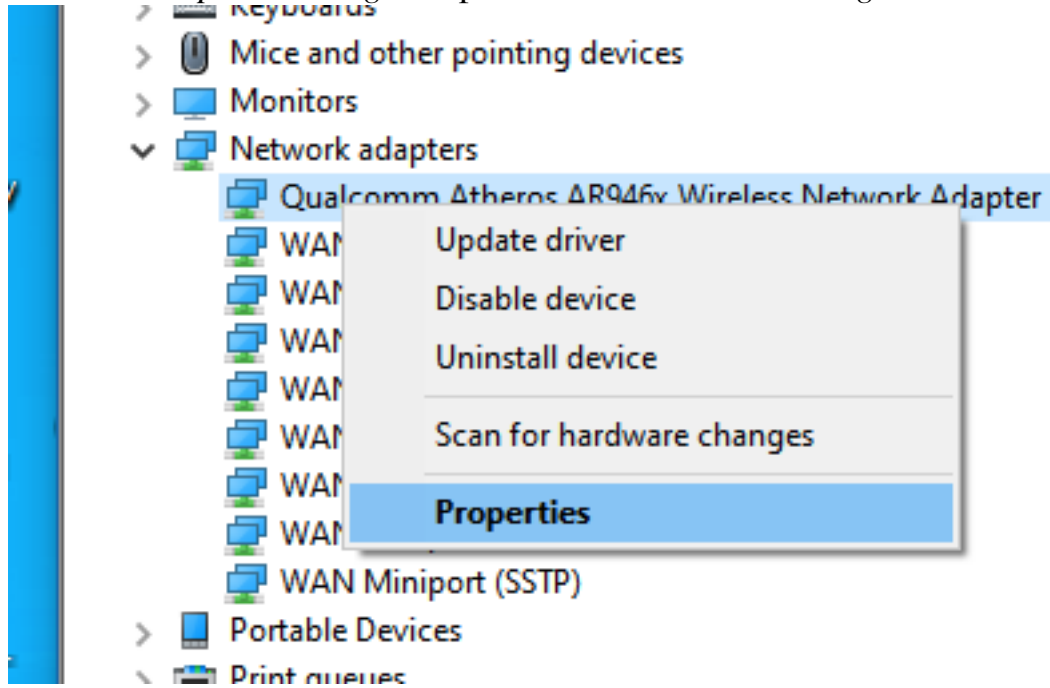


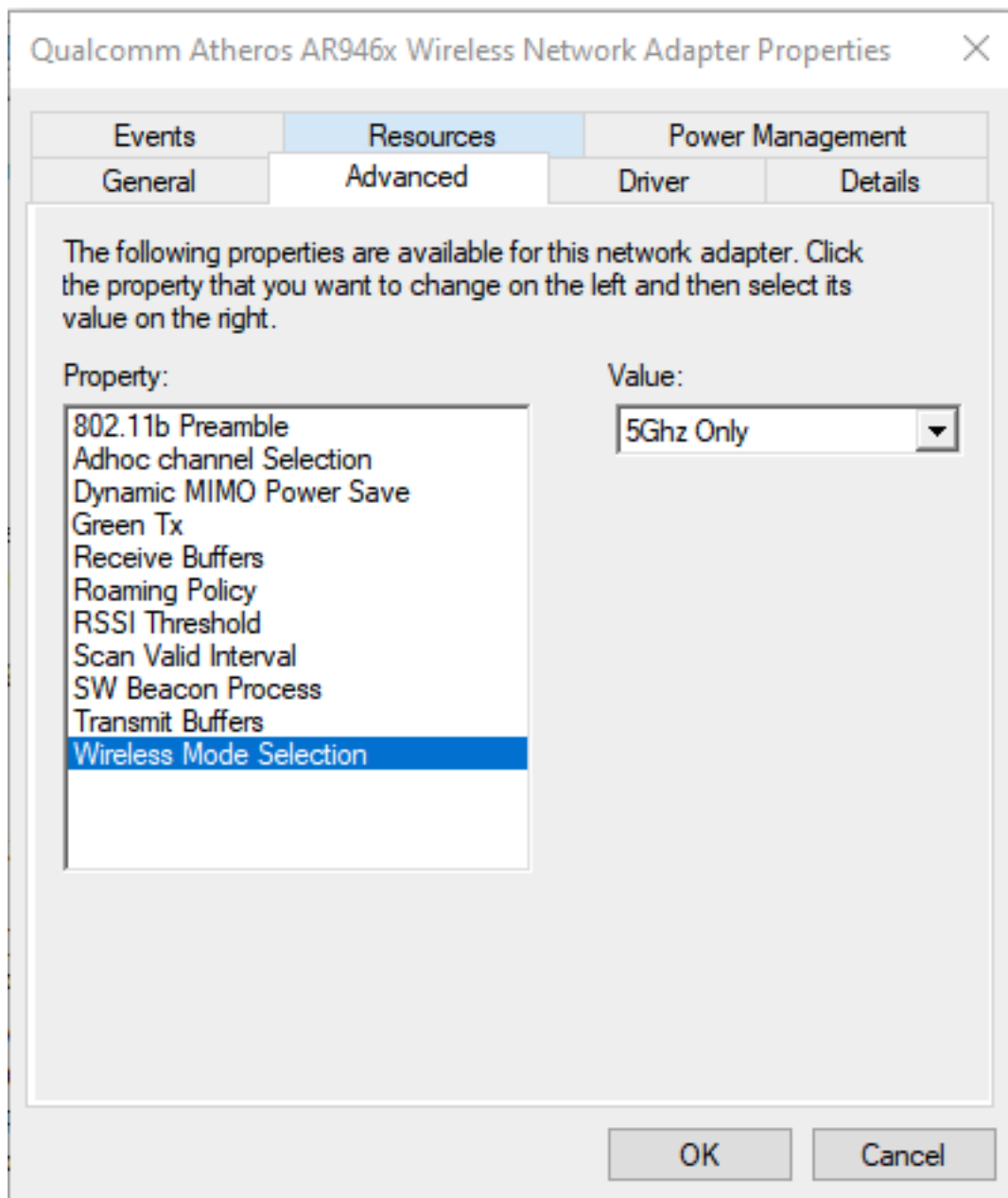
NETWORK SETTING

If the computer does not connect to the machine it can be that the computer is set to another frequency than the machine. To make it work you can open the *Network adapters settings Properties* in the *Device manager*:



(cont. on next page)

Select the *Advanced* tab and choose *Wireless Mode Selection* with value 5GHz.



Network setting. Last revised May 2021